

GEOSEVEX

RESURFACING OF TIRE AND SUPPORTING ROLLERS (RTAR)



Why Geoservex?

We have specifically designed machines to accommodate and suitable for various OEM makes rotary kiln and different dimensions of tires and supporting rollers. All work is completed by experienced Geoservex grinding specialist.

Geoservex-India proudly launching "Resurfacing of Tire and Supporting Rollers" (RTAR) services for all the esteemed customers.

Why Resurfacing? (RTAR)

Rotary kilns, dryers and similar types of rotary equipment stay in continual operation most of the year and as time goes by, various types of wear problems occur. Tire and roller naturally form irregular surface profiles due to improper skewing of rollers and in addition to pitting due to raw dust, spalling, irregular markings and rolled-over edges.

Maintain and Improve the Mechanical Stability of Rotary Kiln Consequences if not performing RTAR.



As wear progresses between tire and roller, the following issues will generate on rotary kilns and dryers.

- ▶ Vibrations at the supports
- ▶ Inability to control axial balancing of kiln
- ▶ Uneven load due to improper contact
- ▶ Premature bearing failure
- ▶ Increased main drive power consumption
- ▶ Damage to tire retaining components, and
- ▶ Damage to support bases, and drive components.

Geoservex RTAR Services



Geoservex grinding specialist can control the behavior of the kiln/rotary equipment during the Resurfacing process:

- ▶ Resurfacing removes work hardening and minimize the damage of the fresh surfaces.
- ▶ Resurfacing of tire thrust face and thrust roller, to remove the waviness over the thrust face and also to remove the flat marks, step over the thrust roller top and bottom land and tire thrust face while kiln in operation.
- ▶ Resurfacing changes the thrust characteristics of the support rollers and allow free travel of the roller in the support bearings.



- ▶ These changes are continuously monitored during the process and adjustments are made to control the position of the kiln/rotary equipment.
- ▶ Geoservex specialist accurately measure and report the diameter before and after the resurfacing and necessary support rollers adjustment has to be carryout without disturbing the kiln production.

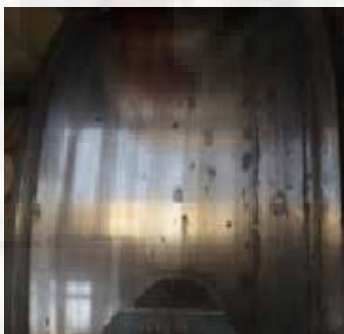
Benefits by doing resurfacing of tire and supporting rollers



- ▶ Improves the mechanical stability of kiln/dryer.
- ▶ Improve the contact between tire and rollers.
- ▶ Eliminate vibration at the supports.
- ▶ Improves the axial balancing of kiln.
- ▶ Plant operation is uninterrupted.
- ▶ Minimize the operating cost.
- ▶ Prolong service life.

Examples:

Condition of Rolling Surfaces Before / After Grinding



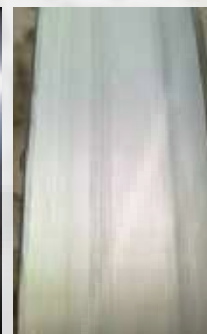
Supporting Roller



Tire



Supporting Roller



Tire



GEOSERVEX

Head Quarter In Poland

Geoservex, Zbigniew Krystowczyk,
Engineering Measurements Enterprise,
Str.Kościuszki 27/19A,
85-079 Bydgoszcz, Poland

Tel : + 48 52 3456 250,
Fax : + 48 52 3456 255
email : office@geoservex.com

Head Quarter In India

Geoservex Hub India Pvt Ltd,
Krunal Porecha (G.M- Sales & Service)
F2, B1, Sai Krish, 4th Main road,
CBI colony, Perungudi,
Chennai- 600 096, India.

Contact No : +91 90030 88004
email : office-india@geoservex.com